



Press Release – 20th April 2007

LONDON, United Kingdom: Crew Gold Corporation ("Crew" or "the Company") (TSX: CRU) (OSE: CRU) (Frankfurt: KNC) (OTC-BB-Other; CRUGF.PK) today announced:-

Updated Mineral Resource and Reserve for Nalunaq Gold Mine as at 31 December, 2006

Crew is pleased to provide an update of mineral resources and reserves at the Nalunaq Gold Mine ("NGM") joint venture in South Greenland (Crew, 82.5% equity).

The 2006 surface drilling program, combined with new underground development, has provided the basis for updating of resources and the first reporting of ore reserves for this operation. The results show that last year's program has maintained the operation's approximate 10 year resource inventory (at current production rates) and delivered a modest 7% increase to Indicated Resources, in spite of depletion due to mining operations.

The majority of Resources at NGM are classified as Inferred, due to the narrow-vein, nuggety nature of the deposit, whereby drilling alone does not provide reliable grade estimation. Measured and Indicated Resources are only defined after underground drifting on structure and detailed sampling has been completed.

Total Inferred Resources have been estimated at 1.5 million tonnes at approximately 17 g/t gold ("Au") (diluted to 1.5m assumed mining width and zero cut-off grade) containing approximately 823,000 ounces gold. Inferred Resources are defined on the basis of a potentially mineralized area, defined by regular drilling intercepts, and excluding areas where more closely spaced sampling and underground development has allowed for classification of indicated resources. All Inferred Resources have been subject to reduction by assuming 40-50% payability within the areas defined by drilling intercepts and surface sampling. The grade is assumed to be similar to the average of previously recovered ore, within a range of 16-21 g/t, as the drill intercepts appear to show a similar level of variability as the earlier resources.

To date, a total of 172 surface diamond drill holes, totalling 30,443 m of core have been drilled in the deposit (Figures 1 and 2). The Inferred Resource areas comprise the Target Block, the Upper and the South Blocks as well as the Mountain Block, where resources have been inferred on the basis of continuous outcrops. Surface channel sampling has been conducted over 2,000 m of exposed mountain outcrop, on average in 1-meter intervals along the East face (Target and Upper blocks) and between 20-40 m intervals on the Mountain Block.

Indicated Resources total 535,000 tonnes at 18 g/t for approximately 315,000 oz gold and are based on data derived from underground drifting and systematic sampling at 1-3 m intervals. Indicated resources have a payability factor of 80% recoverable, in line with previous production performance. A total of 5,000 m of on-vein development has been completed in strike drives and raises within the Main Vein structure. A total of 2,440 channel and chip samples have been collected during the exploration stages and a further 3,400 chip samples have been taken in the faces of strike drives and slot raises since production commenced in 2004.

Indicated and Inferred Resources at Nalunaq are summarized in Table 1. The most significant difference to previous estimates is that Indicated Resources are now included from the Upper Block. This is due to the fact that mining development has advanced into this area and therefore activated substantial indicated resources, which are based on continuous sampling along surface outcrops. In addition, a small contribution is added from underground development near the 500 m level. The South Block is slightly expanded due to new underground development while the Target Block shows a reduction of approximately 50,000 ounces, largely due to mining depletion.

NGM Ore Resources as at 31 December 2006				
Block	Class	Payable Tonnes	Grade (g/t Au)	Contained Ounces
Target Block	Indicated	80,000	24	63,000
South Block	Indicated	185,000	16	95,000
Upper Block	Indicated	270,000	18	157,000
Total, Indicated		535,000	18	315,000
Target Block	Inferred	128,000	18	74,000
South Block	Inferred	640,000	16	330,000
Upper Block	Inferred	535,000	18	310,000
Mountain Block	Inferred	212,000	16	109,000
Total, Inferred		1,515,000	17	823,000

Table 1

Ore Reserves

Probable Reserves are a subset of Indicated Resources and are defined where stope layouts have been completed following sublevel drift and raise development. The design of stopes is based on closely spaced sampling and assignment of actual grades from at least three sides of individual blocks, using a cap of 300 g/t Au. Current probable ore reserves total 205,000 tonnes at 18.8 g/t Au for 124,000 ounces contained gold (Table 2). A mining recovery factor of 84% has been applied for expected losses in pillars and other unrecoverable areas. A gold price of USD 575 per ounce has been used in the estimation of ore reserves.

NGM Ore Reserves as at 31 December, 2006				
Block	Class	Payable Tonnes	Grade (g/t Au)	Contained Ounces
Target Block	Probable	61,000	22.2	44,000
Upper Block	Probable	44,000	18.4	26,000
South Block	Probable	37,000	19.3	23,000
Stockpiles	Probable	63,000	15.4	31,000
Total, Probable Reserve		205,000	18.8	124,000

Table 2

Quality Assurance and Control and Qualified Person and notes to resource and reserve estimates

The resource and reserve details in this report have been compiled by Kurt Christensen, Chief Geologist at Nalunaq Gold Mine A/S and have been verified by Jon S Petersen, Senior Vice President of Crew Gold Corporation. Mr Petersen is a Fellow of the Geological Society of London and the Society of Economic Geologists and a "Qualified Person" within the meaning of Canadian National Instrument 43-101-Standards of Disclosure for Mineral Projects. Mr. Petersen is not "independent" of Crew Gold Corporation in the context of NI 43-101 as he is employed by and holds securities of the Company.

NGM has adopted the following procedure for resources reporting because of the narrow-vein nature and high nugget effect. Inferred resources are those resources which provide reasonable evidence for structural continuity, on the basis of drilling and underground sampling, but where drill results cannot provide reliable data for grade estimation. Because of the inability to assign a specific grade, the company has chosen to restrict inferred resources further through an assumed payability factor, which reflect the probability of the conversion of inferred resources into mineable resources within a certain are, based of historic records.

For grade estimates, the company has chosen to use grades obtained in the completed mining record and assigns a grade of 18 g/t Au, within a range of 22-16 g/t Au, for the Target Block and Upper Block as a best estimate, following the recommendations of independent consultants Snowden Mining Consultants Ltd (2005) and previously reported. For the South Block and Mountain Block, a more conservative, lower grade value of 16 g/t has been used due to expected higher variability.

The Company has elected to calculate ore reserves only in areas where the Main Vein has been fully exposed and developed by strike drives and slot raises, and where these drifts have been systematic sampled and assayed and stopes designed.

Drilling is conducted using industry accepted equipment and standards for drilling and sampling. Drilling is conducted using NQ/HQ core drilling and assaying based on half cores. Samples are divided on lithology and minimum 0.5 m intervals. Mineralised zones always include the nearest cm of contact rocks. Sampling is based 3-5 kg samples milled to 80% less 65 µm and a split to 500 g sample for assaying by leachwell methods in the Mine laboratory of NGM. QA/QC procedures include regular check assaying at independent, internationally recognized laboratory (ALS Chemex, Sweden) as well as use of internal standards, duplicate analyses and blanks.

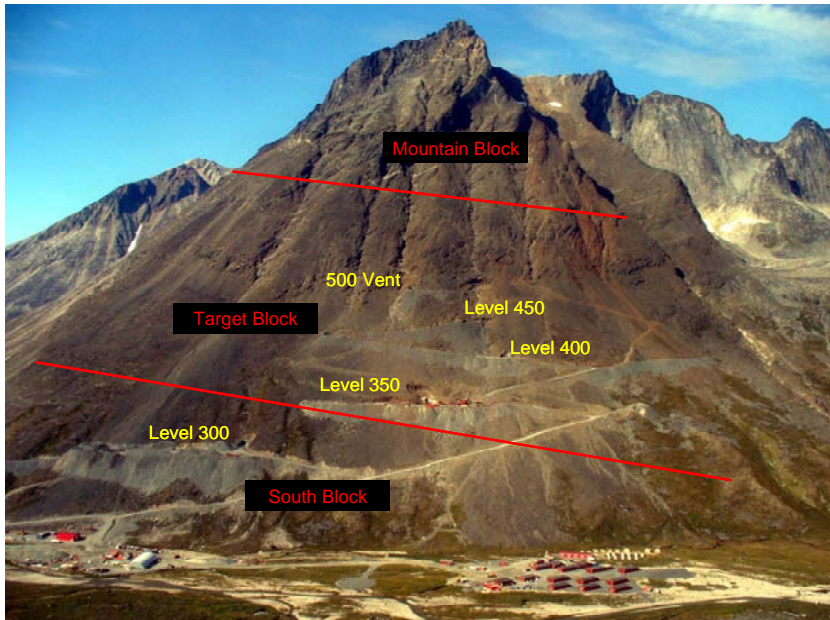


Figure 1 Nalunaq Mountain showing position of Mining Blocks

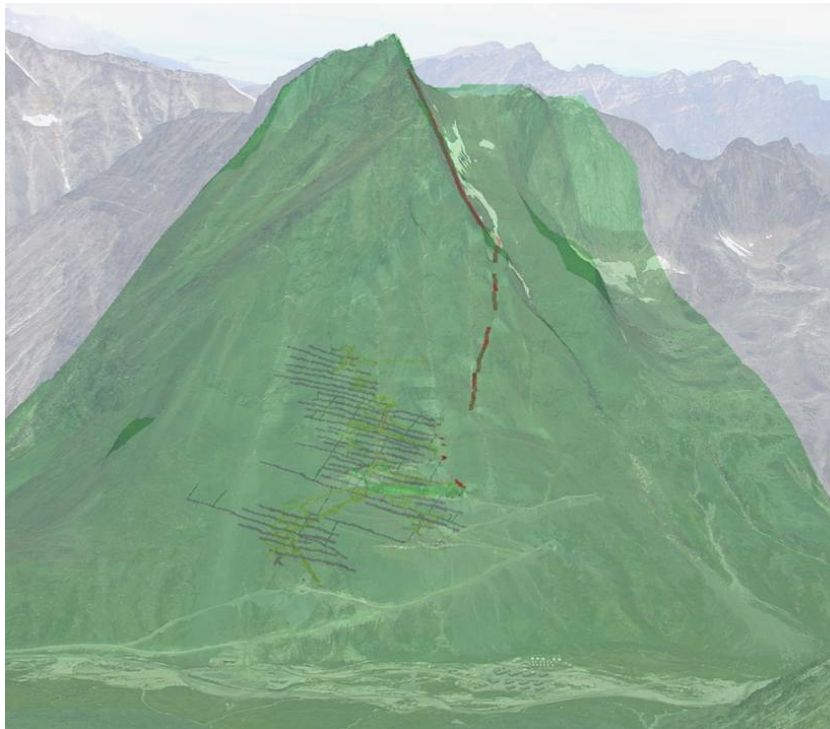


Figure 2 Projection of drilling and underground development, Nalunaq Gold Mine

Jan A Vestrum
President & CEO

Safe Harbour Statement

This news release contains forward-looking statements which reflect the expectations of management and the board of directors, and are made pursuant to applicable and relevant national legislation (including the Safe-Harbour provisions of the United States Private Securities Litigation Reform Act of 1995) in countries where Crew Gold Corporation is conducting business and/or investor relations. Forward looking statements typically contain words such as “believes”, “anticipates”, “continue”, “could”, “expects”, “indicates”, “plans”, “will”, “may”, “projects”, “would” or similar expressions suggesting future outcomes or events, although not all forward-looking statements contain these identifying words. Such forward-looking statements reflect the current beliefs of management and the board of directors based on information currently available to them. Forward-looking statements involve inherent risks and uncertainties, and Crew cautions readers not to place undue reliance on these statements as a number of important factors could cause Crew’s actual results to differ materially from the beliefs and expectations expressed in such forward-looking statements. Factors that could cause actual results to differ materially from the results discussed in the forward-looking statements, include, but are not limited to, the factors discussed under the heading “Risks and Uncertainties” in Crew’s Annual Information Form dated October 10, 2006, as filed on SEDAR at www.sedar.com. Although the forward-looking statements contained in this news release are based upon what management and the board of directors believes to be current and reasonable assumptions, Crew cannot assure readers that actual results will be consistent with these forward-looking statements. The forward-looking statements contained herein are made as of the date of this news release and are expressly qualified in their entirety by this cautionary statement. Crew undertakes no obligation to publicly update or revise these forward-looking statements to reflect subsequent events or circumstances. Cautionary Note to US Investors - The United States Securities and Exchange Commission permits US mining companies, in their filings with the SEC, to disclose only those mineral deposits that a company can economically and legally extract or produce. We use certain terms on this website (or press release), such as “measured”, “indicated”, and “inferred” “resources”, which the SEC guidelines strictly prohibit US registered companies from including in their filings with the SEC. US Investors are urged to consider closely the disclosure from the SEC’s website at <http://www.sec.gov/edgar.shtml>.